



WATERSTREET
BY THE PARK

FOR LEASE

Water Street by the Park

1620-1630 Water St & 234-262 Leon Ave, Kelowna, BC

**ONE UNIT
REMAINING**



KRIS McLAUGHLIN, CCIM

Personal Real Estate Corporation

REMAX Commercial REMAX Kelowna

kris@commercialbc.com

250.870.2165

NICK RENTON

William Wright Commercial

nick.renton@williamwright.ca

778.584.5308

JEFF BROWN

William Wright Commercial

jeff.brown@williamwright.ca

250.575.8768

Learn more about Water Street by the Park www.waterstbythepark.com

WATER STREET BY THE PARK

Complex Overview

Property Details

Civic Address:

1630 Water St, Kelowna, BC

Legal Description:

Proposed Strata Lot, Plan EPP111545, District Lot 139, ODYD

Location:

The complex is located on the northwest corner of Water Street and Leon Avenue at the Gateway to the Kelowna's Downtown Core

Number of Available Commercial Units:

1

Remaining Unit Size:

±3,255 SF (potential to be demised)

CRU Specifications:

Unit will be delivered in shell state with up to 200A 3 phase electrical supply; 1.25" water supply line; and HVAC units included

Parking:

Commercial parking will be available but has not been assigned at this time

Zoning:

UC1 - Downtown Urban Centre

Lease Rates:

\$34 to \$42/SF plus additional rents & applicable taxes
contact listing agent for more information

Availability:

Now available for immediate occupancy

Water Street by the Park

1620-1630 Water Street & 234-262 Leon Avenue

Discover Water Street by the Park, a premier development by Orchard Park Properties, in the gateway to Kelowna's Downtown Core. The project is transforming the entrance to the city near the William R Bennett Bridge and bring energy to the area through transitioning into an unique and vibrant urban community.

The first phase of Water Street by the Park is a two-tower mixed-use complex that will add 496 residential condos to the downtown core. Sales of the available units have been brisk, with Tower 1 and The Eli tower set to be delivered in the near future.

Commercial Units

At street level, facing Water Street and Leon Avenue, will be 5 commercial units ranging in size from 1,280 SF to 3,255 SF. These units will capitalize on the revitalization and densification going on in the surrounding area. Zoning for the complex is UC1 – Downtown Urban Centre which allows for a large number of retail, office, financial, professional, entertainment, governmental, cultural and civic core uses. Only 1 commercial unit is left in Water Street by the Park

Available Commercial Units Include

1630 Water Street: 3,255 SF (potential to be demised)

1620 Water Street: LEASED

234 Leon Avenue: LEASED

246 Leon Avenue: LEASED

262 Leon Avenue: LEASED

(all available units will be delivered in shell state, ready for concepts and designs specific to your business)

Now Leasing

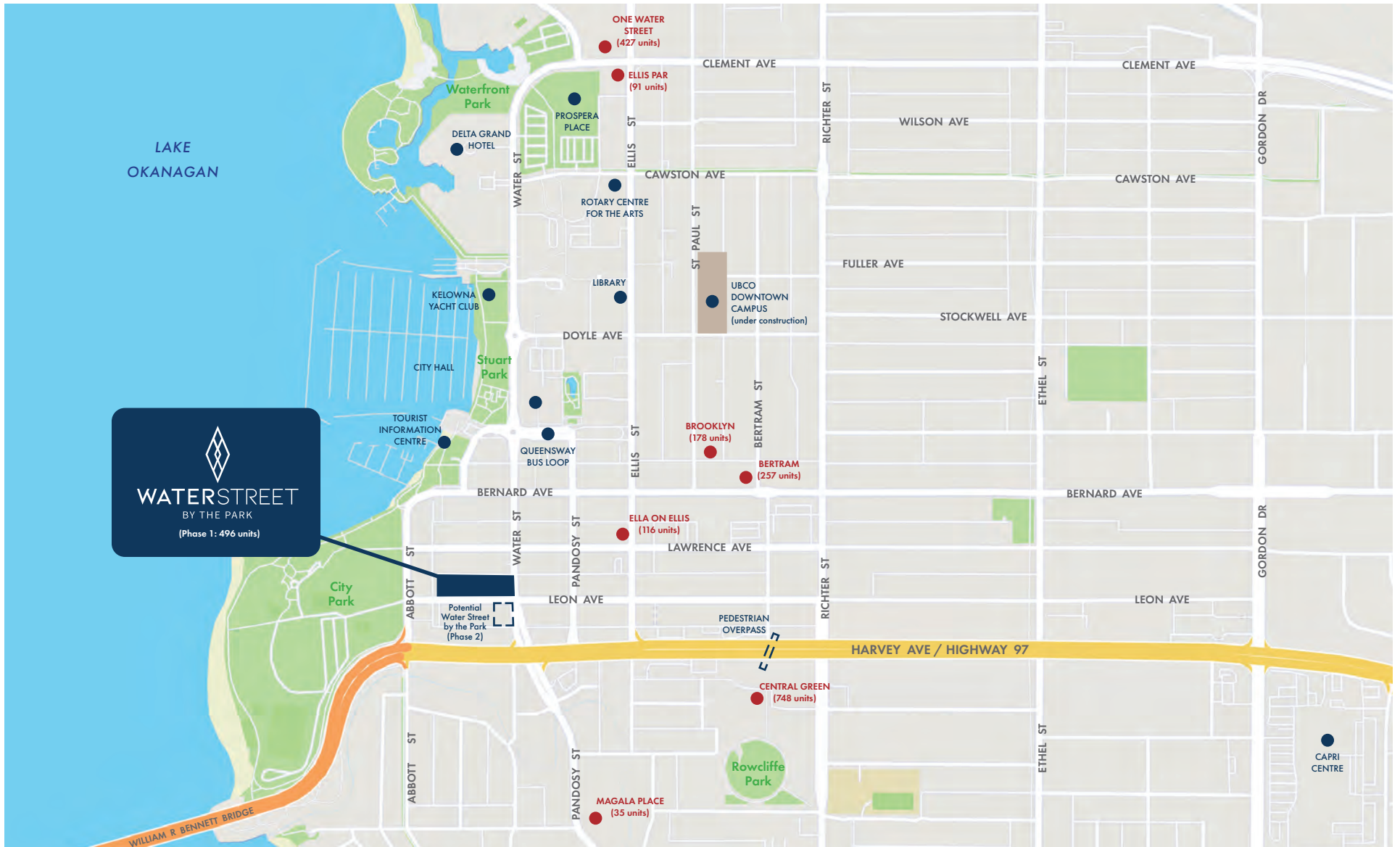
The final touches are being done to the units, which are now available for immediate occupancy.

Your Business. Your Space!

Secure your commercial unit at Water Street by the Park today and position your business for growth in Kelowna's Gateway to the Downtown Core.

WATER STREET BY THE PARK

Prime Downtown Location



● NEW RESIDENTIAL DEVELOPMENTS (number of units)

WATER STREET BY THE PARK

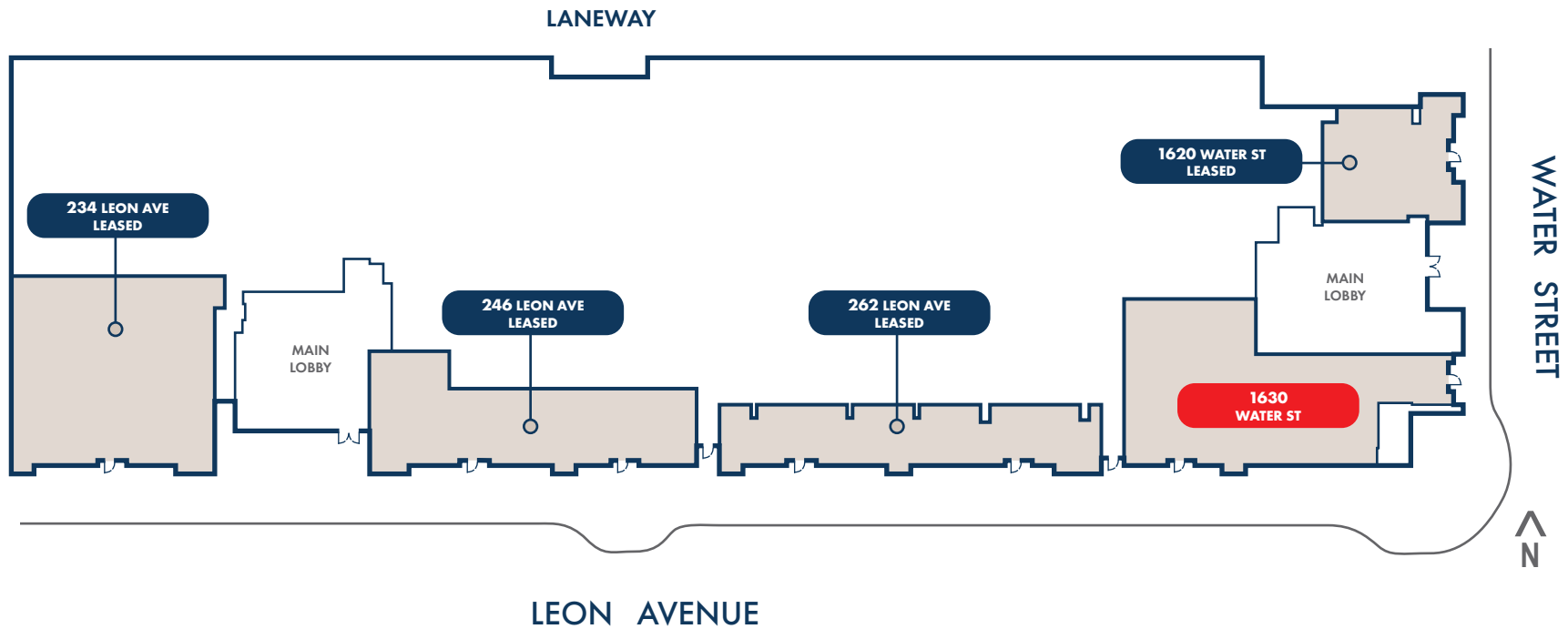
Building Location



Building location is approximate

WATER STREET BY THE PARK

Commercial Units

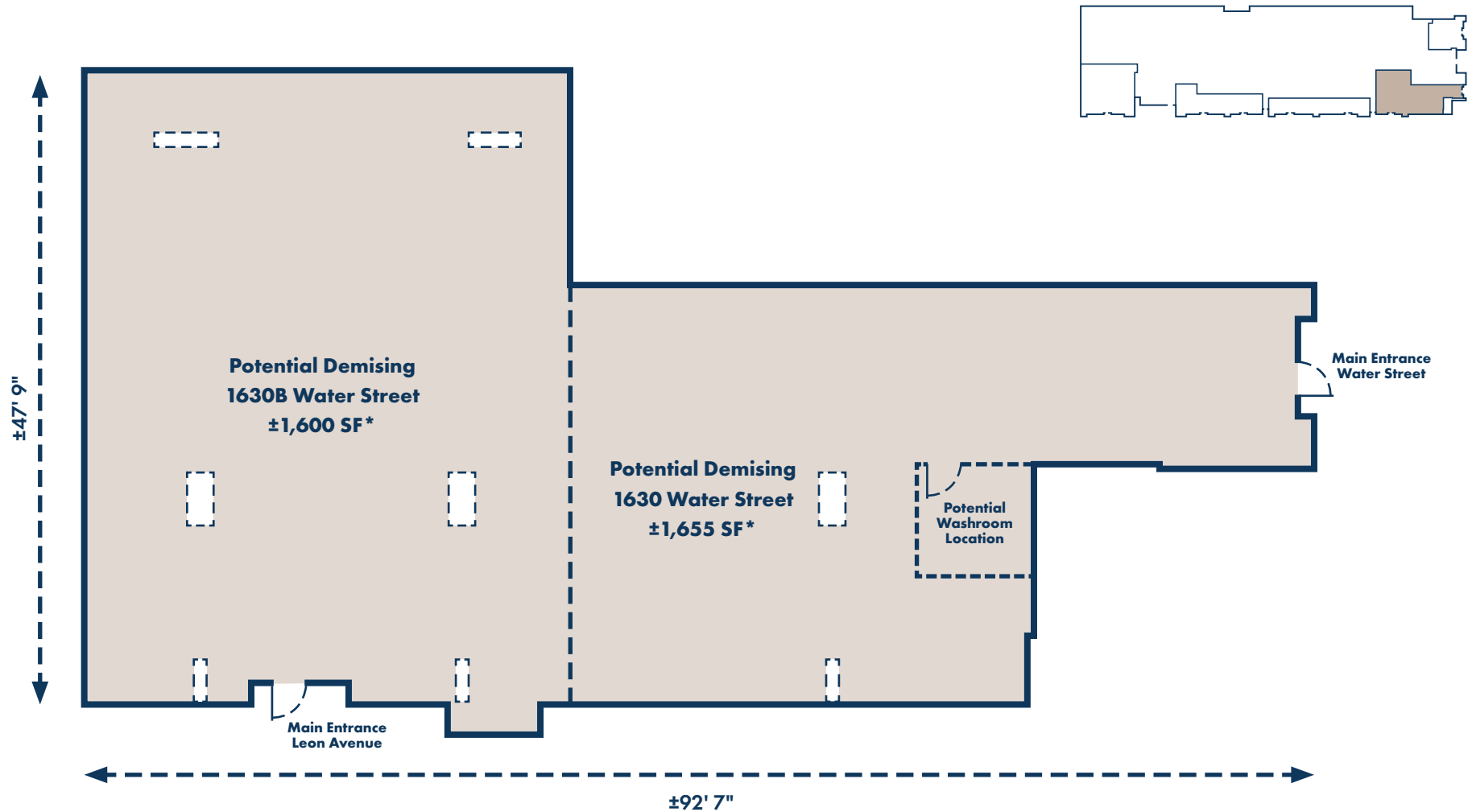


Availability	Unit - Address	Main Floor (sf)	Base Rent (psf)
	234 Leon Ave	3,179	LEASED
	246 Leon Ave	2,316	LEASED
	262 Leon Ave	1,948	LEASED
Available	1630 Water St	3,255	\$38.00
	1620 Water St	1,280	LEASED

WATER STREET BY THE PARK

Commercial Units

1630 Water Street: ±3,255 SF

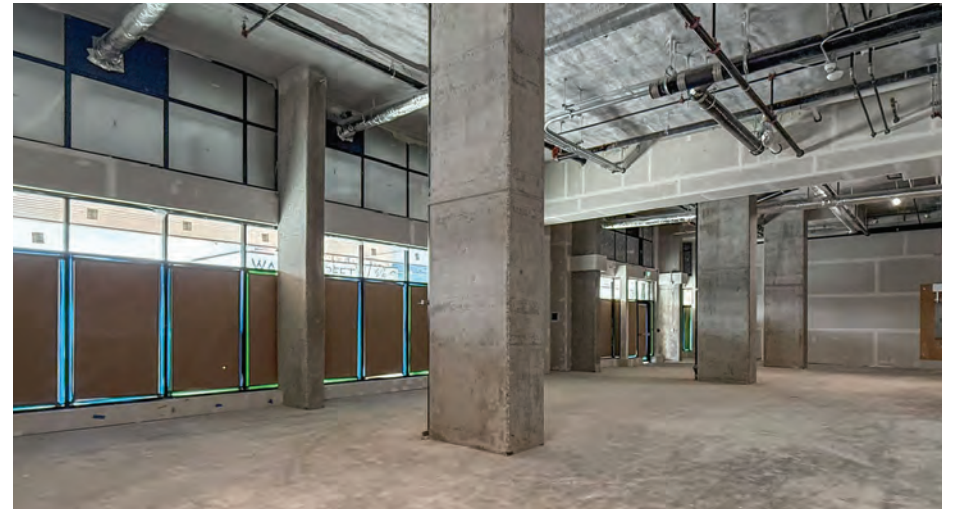
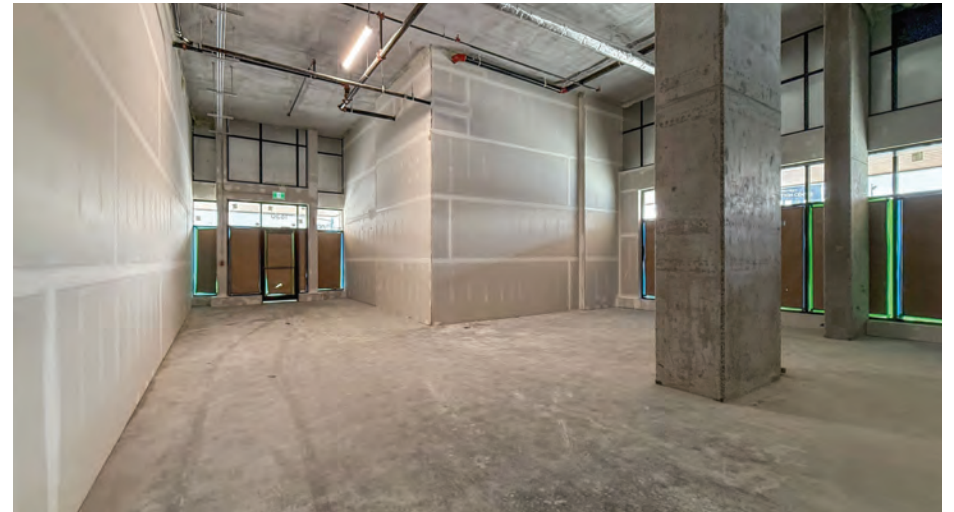


Based on plans provided by the developer, dimensions are approximate and should be verified if important
*Note: Landlord to approve the final demising location and sizing of units

WATER STREET BY THE PARK

Commercial Units

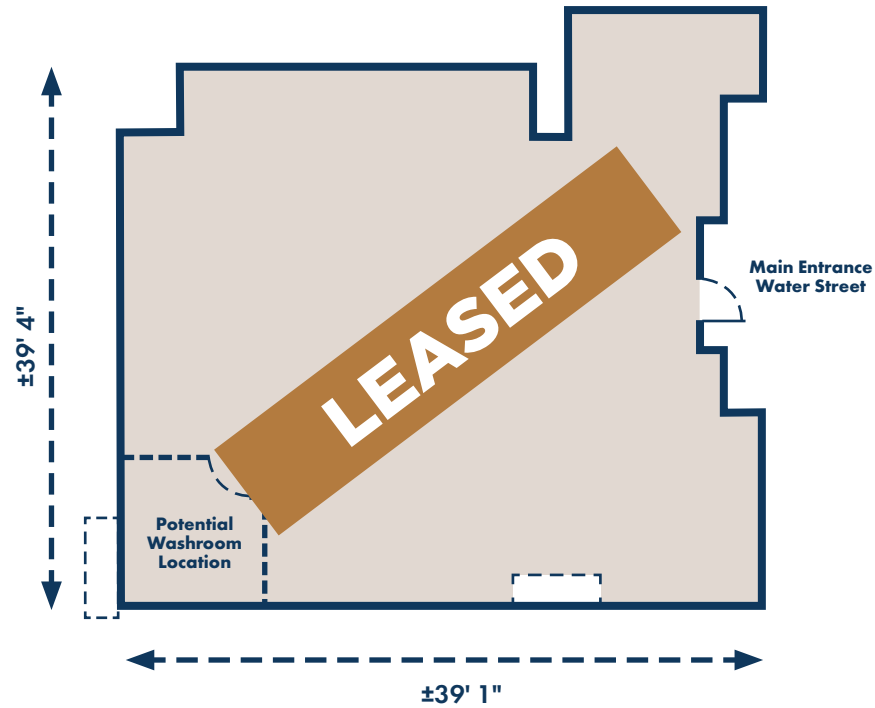
1630 Water Street: Photos



WATER STREET BY THE PARK

Commercial Units

1620 Water Street: LEASED



WATER STREET BY THE PARK

Commercial Units

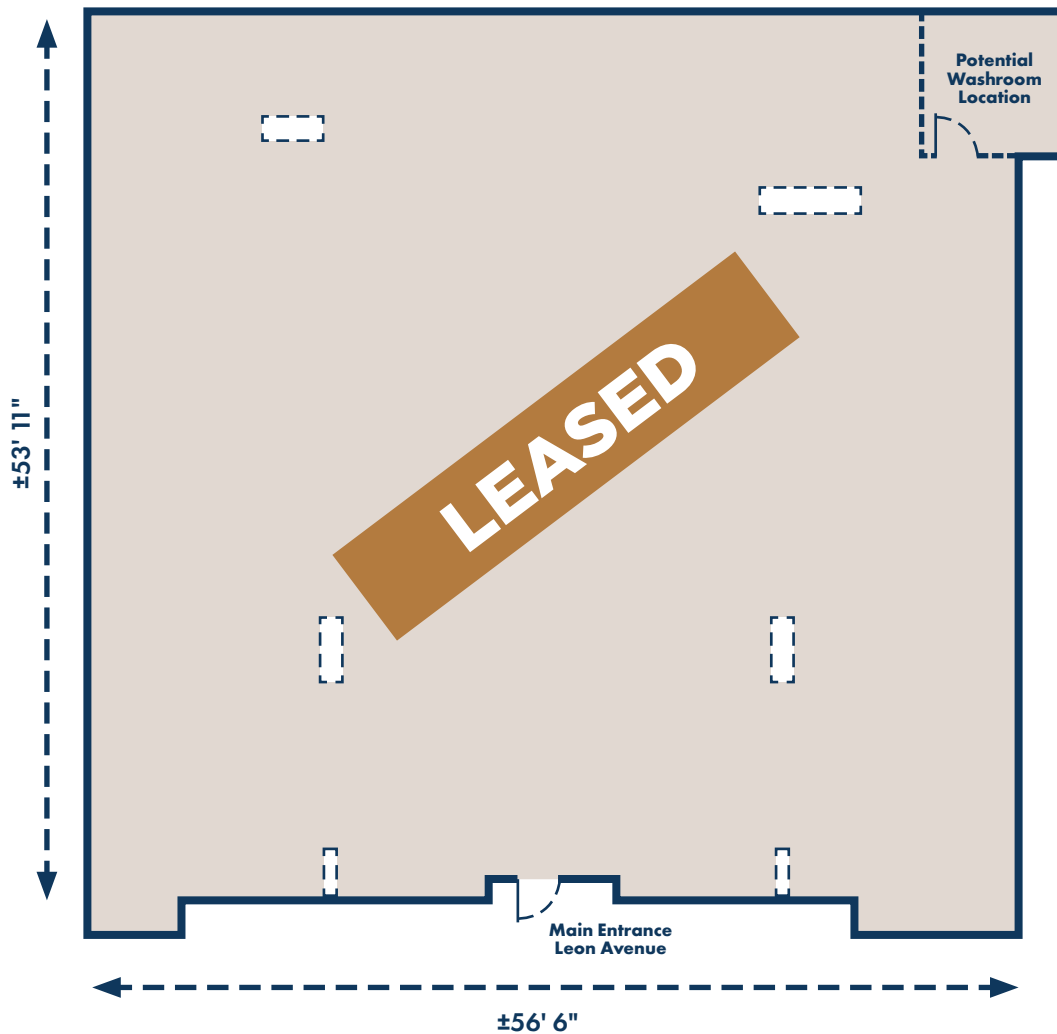
1620 Water Street: LEASED



WATER STREET BY THE PARK

Commercial Units

234 Leon Avenue: LEASED



Based on plans provided by the developer, dimensions are approximate and should be verified if important

WATER STREET BY THE PARK

Commercial Units

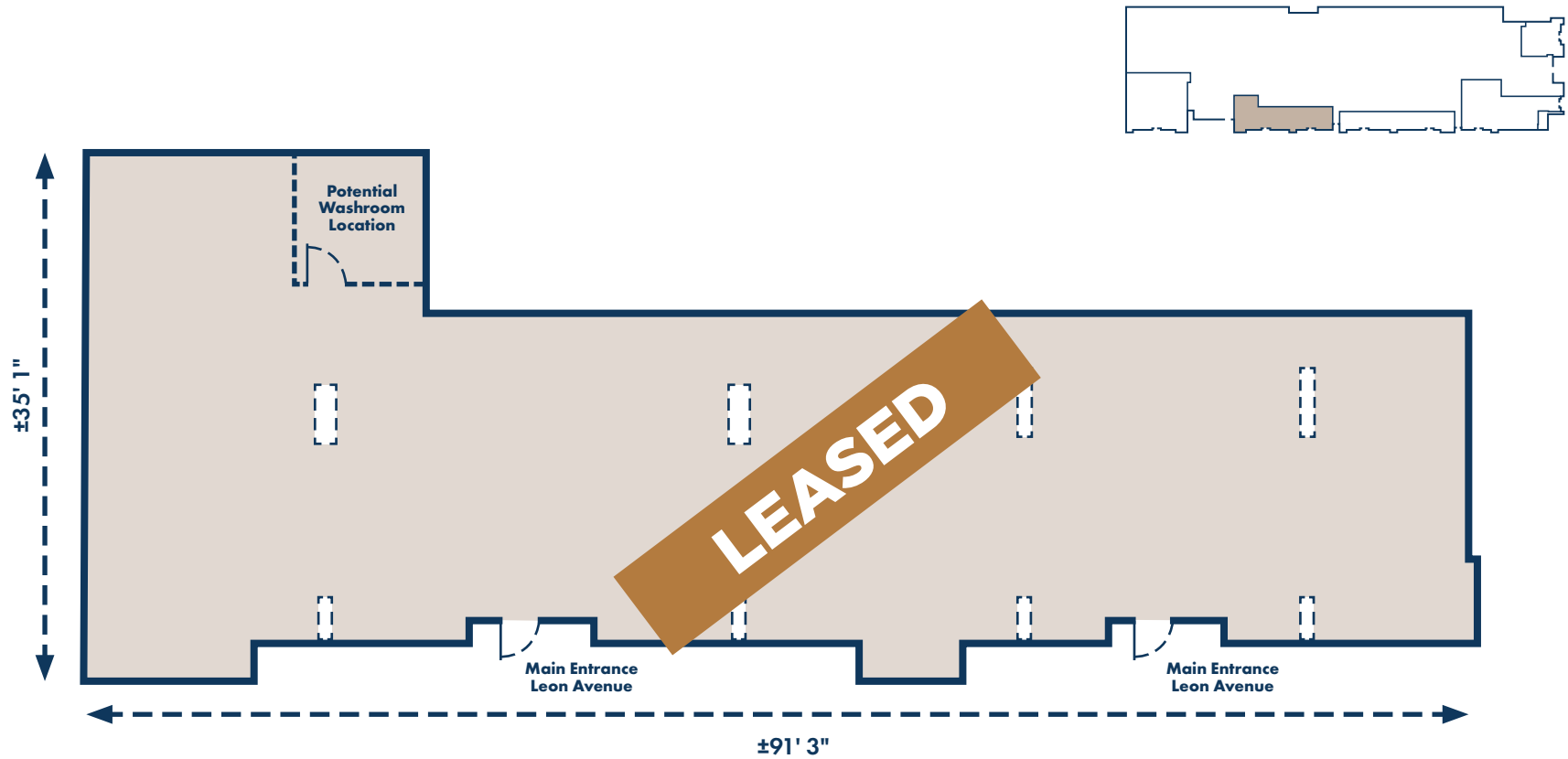
234 Leon Avenue: LEASED



WATER STREET BY THE PARK

Commercial Units

246 Leon Avenue: LEASED



Based on plans provided by the developer, dimensions are approximate and should be verified if important

WATER STREET BY THE PARK

Commercial Units

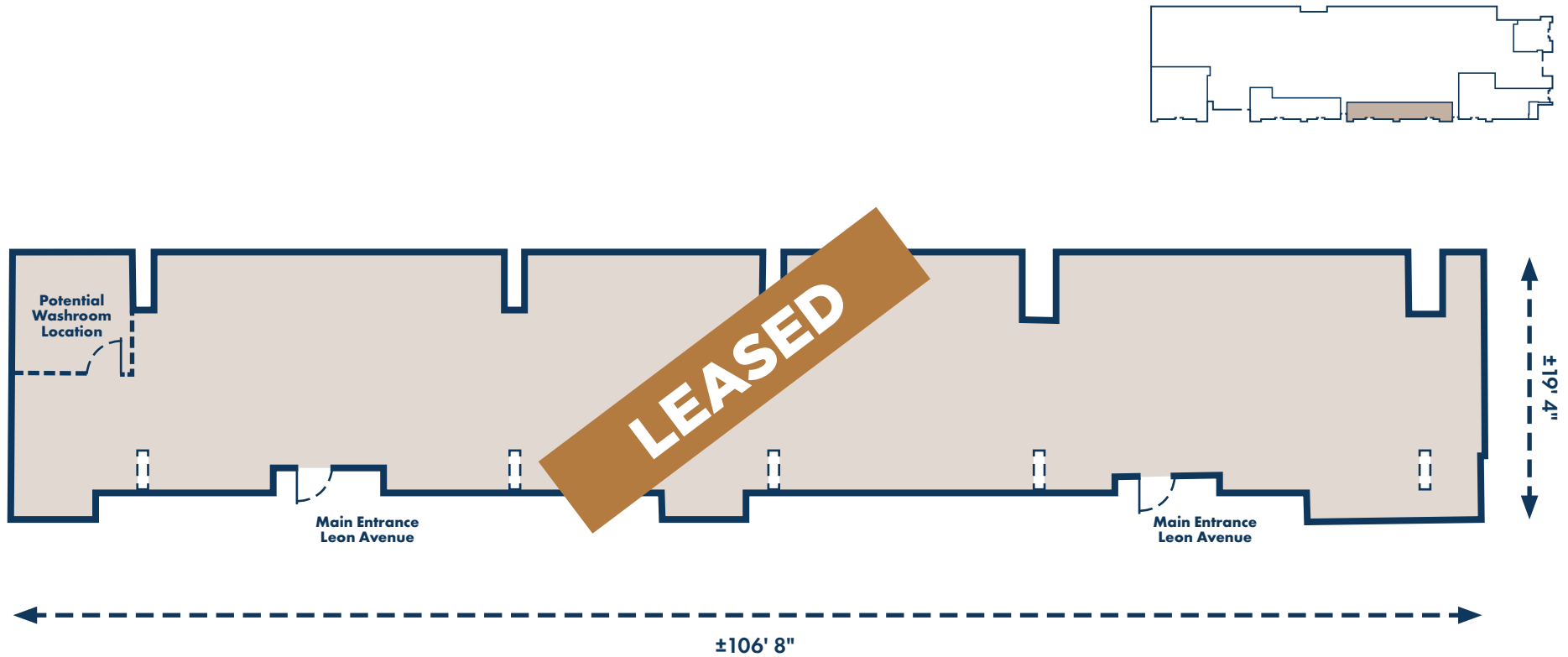
246 Leon Avenue: LEASED



WATER STREET BY THE PARK

Commercial Units

262 Leon Avenue: LEASED



WATER STREET BY THE PARK

Commercial Units

262 Leon Avenue: LEASED



WATER STREET BY THE PARK

The Gateway to Downtown Kelowna

Exterior Photos



WATER STREET BY THE PARK

The Gateway to Kelowna



WATER STREET BY THE PARK

Zoning Information

UC1 Downtown Urban Centre (excerpt from Zoning Bylaw No. 12375)

Section 14.3 – Urban Centre Zone Purposes

UC1 – The purpose of this zone is to designate and preserve land for developments of the financial, retail and entertainment, governmental, cultural and civic core of the downtown while encouraging high density mixed-use buildings.

1. 14.9 Permitted Principal and Secondary Land Uses in Core Area and Other Zones

The principal uses in this zone are:

Alcohol Production Facilities
Animal Clinics, Major
Animal Clinics, Minor
Apartment Housing
Child Care Centre, Major
Cultural and Recreation Services
Drive Throughs
Education Services
Emergency and Protective Services
Exhibition and Convention Facilities
Food Primary Establishment
Gaming Facilities
Gas Bar
Health Services
Hotels / Motels
Liquor Primary Establishment

Non-Accessory Parking
Offices
Participant Recreation Services, Indoor
Personal Service Establishment
Professional Services
Recycling Drop-Offs
Religious Assemblies
Retail
Retail Cannabis Sales
Single Detached Housing
Spectator Sports Establishments
Stacked Townhouses
Temporary Shelter Services
Townhouses

The secondary uses in this zone are:

Accessory Buildings or Structures
Agricultural, Urban
Child Care Centre, Minor
Home-Based Business, Major
Home-Based Business, Minor
Parks
Secondary Suites

E&OE: This information derived from the City of Kelowna - Zoning Bylaw 12375 and is deemed to be reliable and is believed to be true; it has not been verified and as such, cannot be warranted or guaranteed for accuracy, correctness and completeness by Kris McLaughlin Personal Real Estate Corporation, REMAX Commercial or REMAX Kelowna or Nick Renton & Jeff Brown of William Wright Commercial Real Estate Services Inc. Please verify all important information by reviewing Zoning Bylaw 12375 on the City of Kelowna's website.

Orchard Park Properties

An elevated approach to developing Okanagan living.

Orchard Park Properties is dedicated to bringing enhanced residential living to the heart of downtown Kelowna, with a vision of creating world class buildings which add long-term value to the local community. We are proud to offer a product that highlights the best of Kelowna, convenience for its residents, and elevated Okanagan lifestyle.

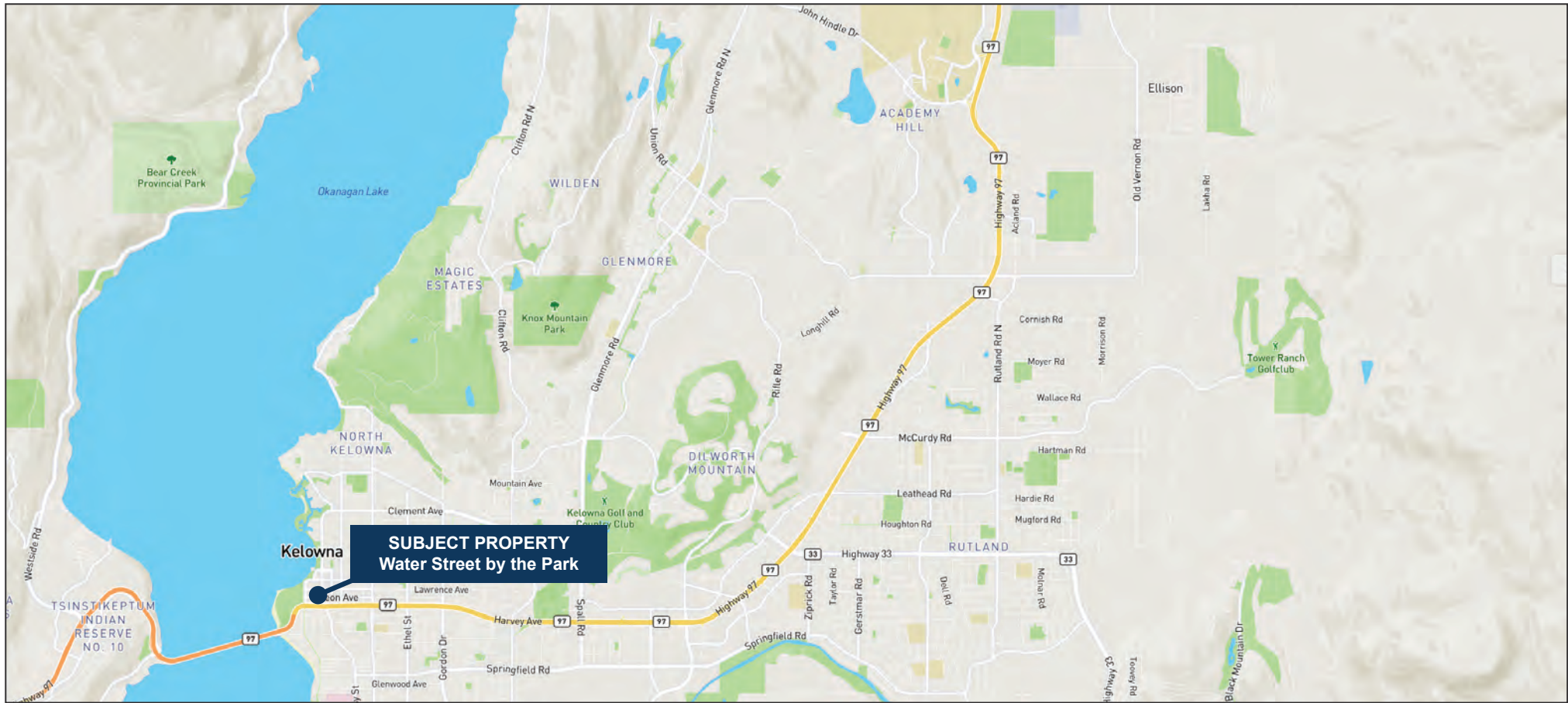
From the beginning phase of design and development to the later phases of construction and sales, our team manages each step. We use quality-driven development and building practices for each project, promising suitability to all our clients. To us, having the ability to lead all aspects of the project is crucial to bringing the most valuable product to our clients.

Learn more about Orchard Park Properties
www.orchardparkpl.ca



WATER STREET BY THE PARK - COMMERCIAL UNITS

1620-1630 Water St & 234-262 Leon Ave, Kelowna, BC



KRIS McLAUGHLIN, CCIM

Personal Real Estate Corporation

REMAX Commercial REMAX Kelowna

kris@commercialbc.com

250.870.2165

NICK RENTON

William Wright Commercial

nick.renton@williamwright.ca

778.584.5308

JEFF BROWN

William Wright Commercial

jeff.brown@williamwright.ca

250.575.8768

This document/email has been prepared by Kris McLaughlin Personal Real Estate Corporation for advertising and general information only. Kris McLaughlin Personal Real Estate Corporation, REMAX Commercial or REMAX Kelowna makes no guarantees, representations or warranties of any kind, expressed or implied, regarding the information including, but not limited to warranties of content, accuracy and/or reliability. All information contained in this document has been obtained from sources believed to be reliable. It is the responsibility of the reader to independently confirm and verify the accuracy of the information and content of this document and to satisfy themselves as to its completeness. Any financial projects, assumptions, or estimates are used for example only and may or may not reflect the current or future performance of the property. This communication is not intended to cause or induce breach of an existing listing agreement.