

**REMAX**  
COMMERCIAL®

**FOR SUBLEASE**  
**HIGH-PROFILE RETAIL UNIT**  
#103 - 1810 Gordon Drive, Kelowna, BC



**Kris McLaughlin** Personal Real Estate Corporation  
kris@commercialbc.com  
250.870.2165

**REMAX Commercial - REMAX Kelowna**  
1391 Ellis Street, Kelowna, BC V1Y 6G1

Each Office Independently Owned and Operated.

# FOR SUBLEASE: #103 - 1810 Gordon Dr, Kelowna, BC

## Property Details

### Civic Address:

#103 - 1810 Gordon Drive, Kelowna, BC

### Location:

Located mid-block on the west side of Gordon Drive between Laurier Ave & Borden Ave across from Capri Centre Mall

### Total Space Available:

1,022 SF

### Zoning:

CA1 - Core Area Mixed Use

### Sublease Rate:

\$31.83/SF (with escalation through the term) plus additional rent of \$11.00/SF (estimated for 2026) & applicable taxes

### Sublease Term:

Sublease expires March 31, 2029

## High-Profile Retail Space Available Across From Capri Centre Mall with Frontage Along Gordon Drive

### Opportunity:

RE/MAX Commercial - RE/MAX Kelowna presents this outstanding opportunity to sublease retail space in a two storey commercial building.

### Features:

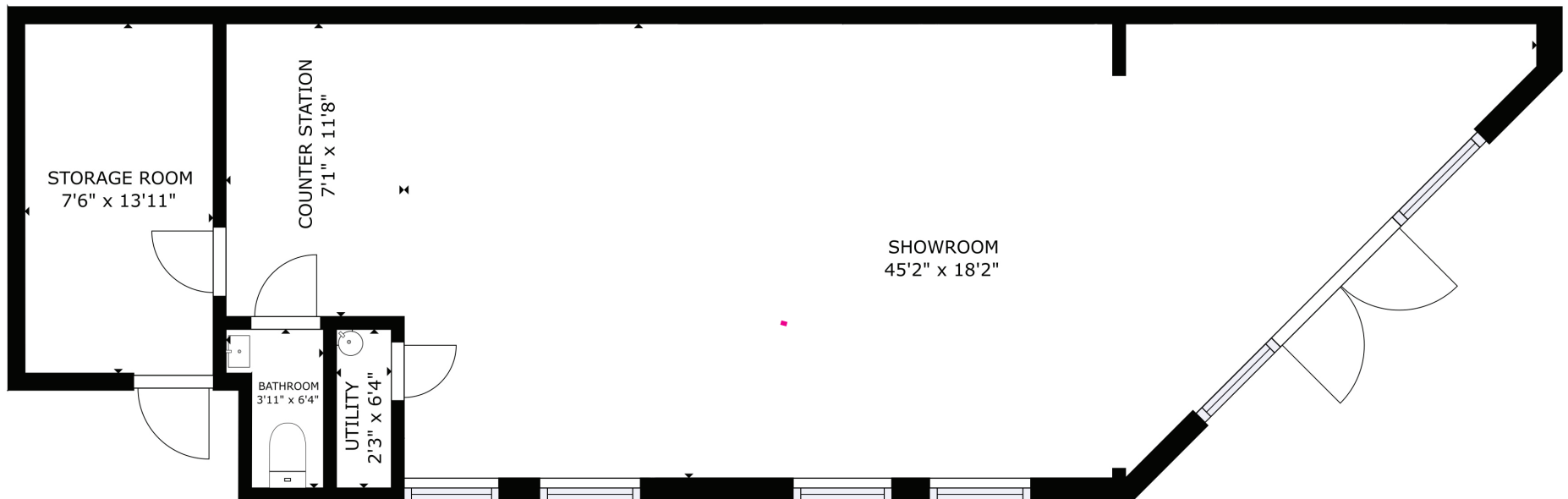
This unit has ±1,022 SF on the main floor of this high-profile commercial building

- ▶ Unit includes an inviting entrance with double glass doors, a large retail area, rear storage/mechanical room, smaller storage room with roughed in plumbing, an in-suite washroom and a convenient rear door
- ▶ Large street facing windows allow for high visibility into the unit from passing pedestrians and vehicles as well as allowing light to permeate the unit
- ▶ Plenty of on-site parking in a common parking lot to the rear of the building
- ▶ Located in the high traffic commercial area along Gordon Drive across the street from the Capri Centre Mall
- ▶ For more information or to arrange a tour of this high-profile retail space contact Kris McLaughlin Personal Real Estate Corporation at 250 870 2165 or by email at [kris@commercialbc.com](mailto:kris@commercialbc.com)



**FOR SUBLEASE: #103 - 1810 Gordon Dr, Kelowna, BC**

## Floor Plan



Note: Floor plan has been derived, is approximate and may not be to scale. Some interior walls may have been adjusted. If important, information and configuration should be verified.

**FOR SUBLEASE: #103 - 1810 Gordon Dr, Kelowna, BC**

## Interior Photos



Note: Cabinetry in the main retail area are to be removed, with the walls left in a paint ready state

**FOR SUBLEASE: #103 - 1810 Gordon Dr, Kelowna, BC**

## Interior Photos



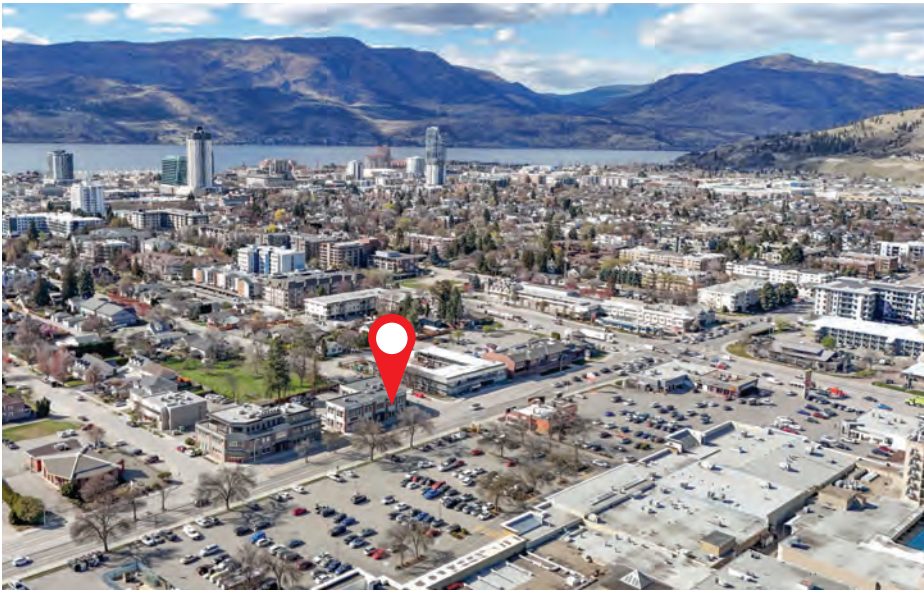
Note: Cabinetry in the main retail area are to be removed, with the walls left in a paint ready state

**FOR SUBLEASE: #103 - 1810 Gordon Dr, Kelowna, BC**

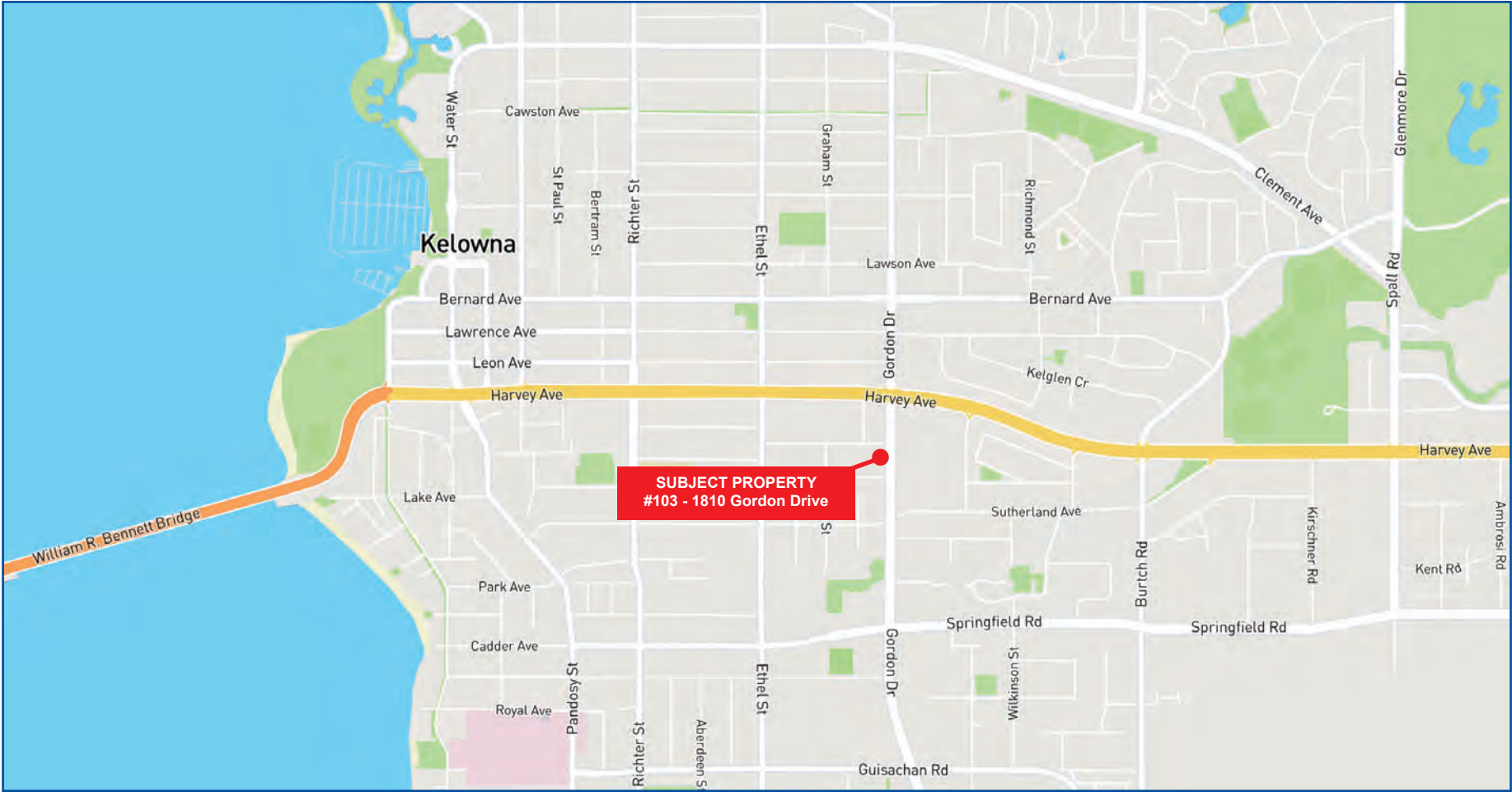
**Exterior Photos**



**Aerial Images**



**FOR SUBLEASE: #103 - 1810 Gordon Dr, Kelowna, BC**



**Kris McLaughlin Personal Real Estate Corporation**  
**REMAX Commercial - REMAX Kelowna**  
#100 - 1553 Harvey Ave, Kelowna, BC V1Y 6G1  
kris@commercialbc.com  
250.870.2165



© Kris McLaughlin Personal Real Estate Corporation - All Rights Reserved.

This document/email has been prepared by Kris McLaughlin Personal Real Estate Corporation for advertising and general information only. Kris McLaughlin Personal Real Estate Corporation, REMAX Commercial or REMAX Kelowna makes no guarantees, representations or warranties of any kind, expressed or implied, regarding the information including, but not limited to warranties of content, accuracy and/or reliability. All information contained in this document has been obtained from sources believed to be reliable. It is the responsibility of the reader to independently confirm and verify the accuracy of the information and content of this document and to satisfy themselves as to its completeness. Any financial projects, assumptions, or estimates are used for example only and may or may not reflect the current or future performance of the property. This communication is not intended to cause or induce breach of an existing listing agreement.

