

REMAX
COMMERCIAL®

FOR LEASE
RETAIL SPACE OR FITNESS STUDIO
3410B 31st Avenue, Vernon, BC



Kris McLaughlin Personal Real Estate Corporation
kris@commercialbc.com
250.870.2165

REMAX Commercial - REMAX Kelowna
1391 Ellis Street, Kelowna, BC V1Y 6G1

Each Office Independently Owned and Operated.

Property Details

Civic Address:

3410B 31st Avenue, Vernon, BC

Location:

Located on the south side of 31st Avenue between 34th Street and 35th Street at the southwest corner of the building

Unit Size:

1,302 SF (approximate)

Parking:

Up to 2 parking stalls available at \$50/month + GST per stall

Zoning:

CMUC - Commercial Mixed-Use: Centre

Lease Rate:

\$17.50/SF + \$6.60/SF NNNs (estimated for 2025) & applicable taxes

Versatile Commercial Space Available on 31st Avenue in Downtown Vernon

Opportunity:

RE/MAX Commercial - RE/MAX Kelowna presents this opportunity to lease a commercial unit in a multi-tenant commercial building, centrally located in Vernon, BC.

Features:

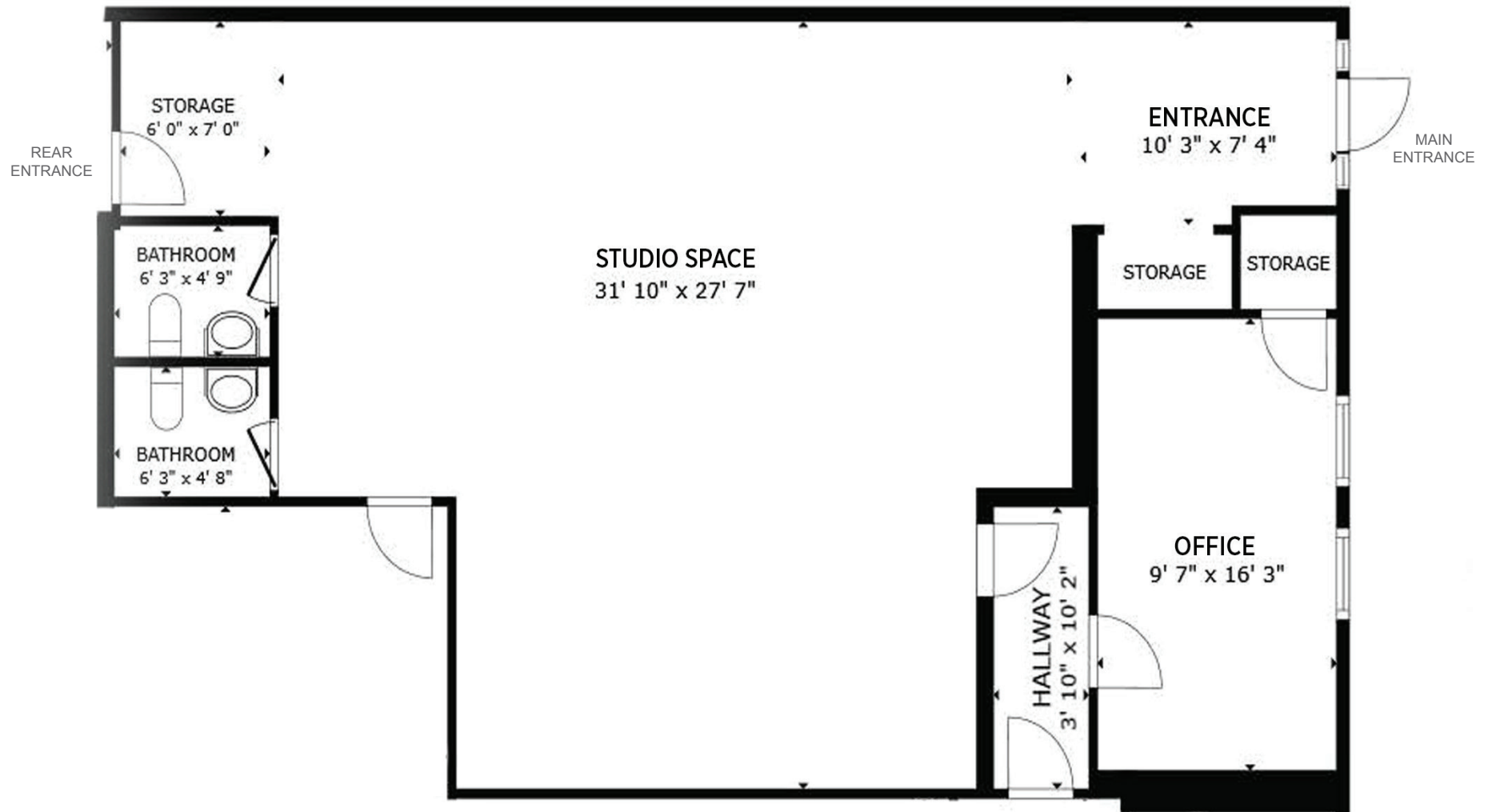
Centrally located commercial unit in a well established commercial area of Vernon, only half a block from Fresh Co, Shoppers Drug Mart and Dollarama.

- ▶ Approximately 1,302 SF of commercial space ideal for a fitness studio or retail outlet
- ▶ Flexible commercial space featuring a large open area, reception area, treatment room or office, two in-suite washrooms and storage areas
- ▶ Unit is located in the southwestern corner of the building and has a front entrance from the complex parking area as well as a rear access from the rear laneway
- ▶ Potential to combine with an adjoining unit (3410A) for a total of ±3,341 SF
- ▶ For more information or to arrange a tour of this space contact Kris McLaughlin Personal Real Estate Corporation of REMAX Commercial - REMAX Kelowna at 250 870 2165 or by email at kris@commercialbc.com



FOR LEASE: 3410B 31st Avenue, Vernon, BC

Floor Plan



Note: Floor plan has been derived, is approximate and may not be to scale. Some interior walls may have been adjusted. If important, information and configuration should be verified.

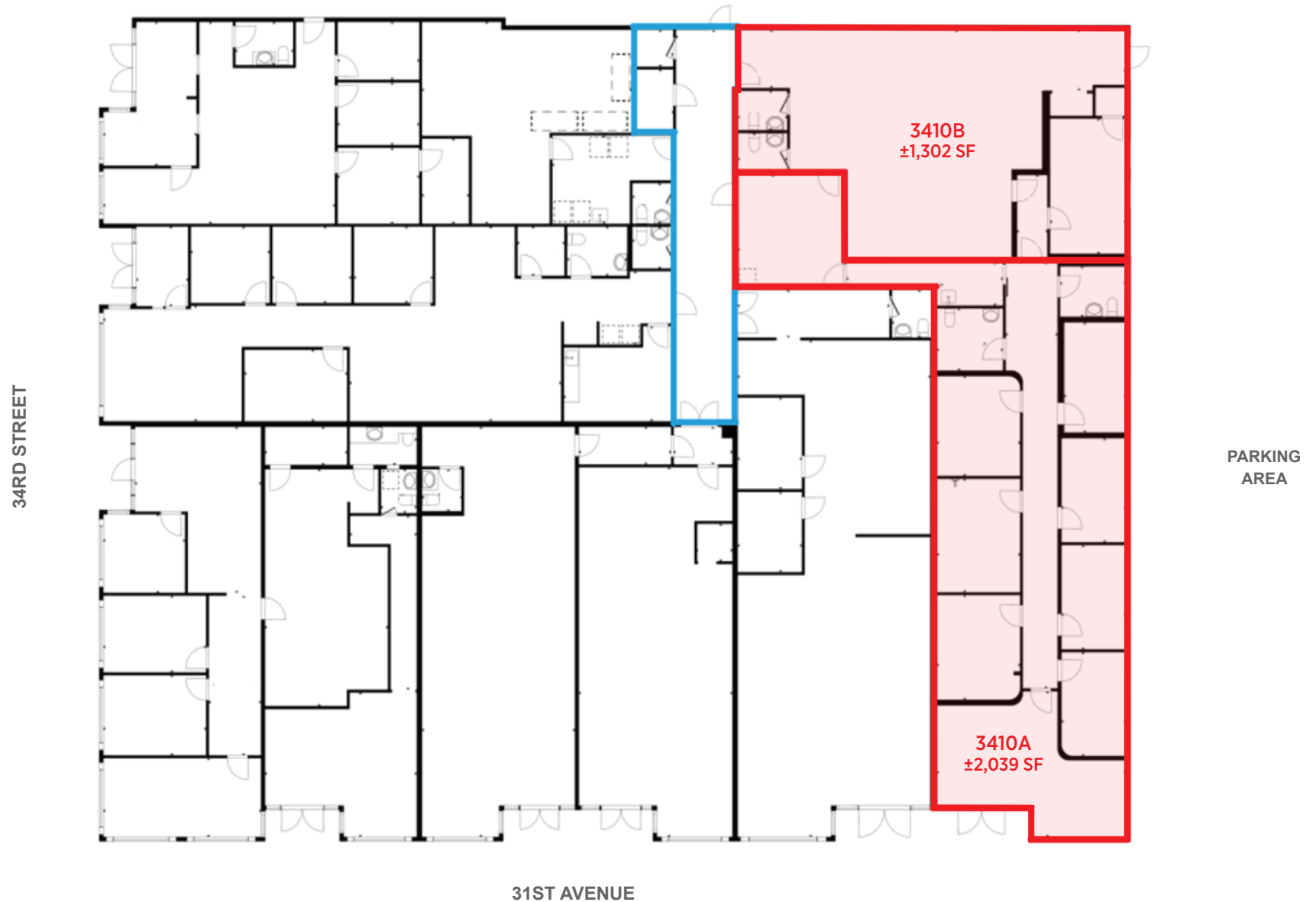
FOR LEASE: 3410B 31st Avenue, Vernon, BC

Interior Photos



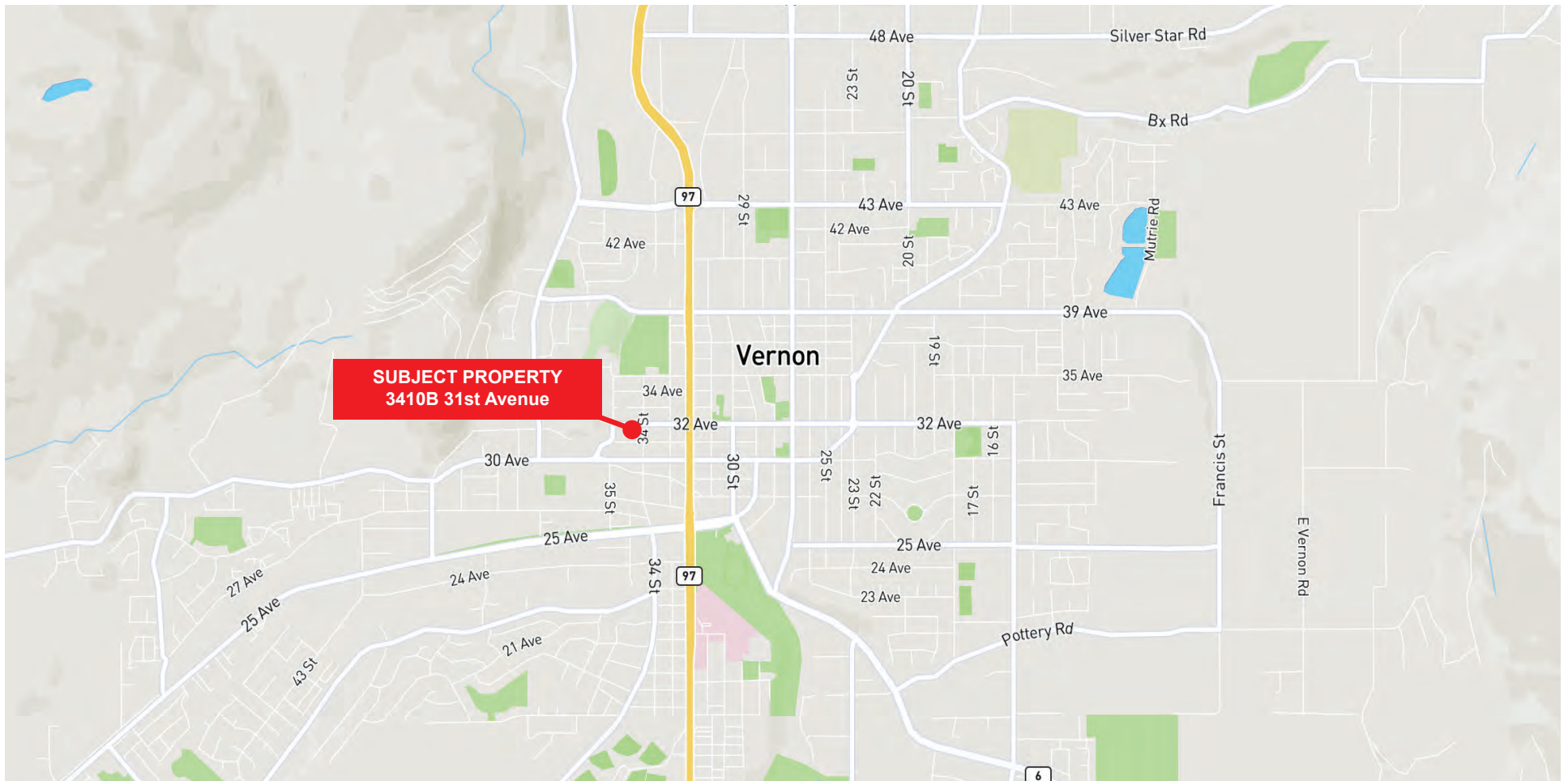
FOR LEASE: 3410B 31st Avenue, Vernon, BC

Other Available Units



Note: Floor plan has been provided, is approximate and may not be to scale. Some interior walls may have been adjusted. If important, information and configuration should be verified.

FOR LEASE: 3410B 31st Avenue, Vernon, BC



Kris McLaughlin Personal Real Estate Corporation
REMAX Commercial - REMAX Kelowna
#100 - 1553 Harvey Ave, Kelowna, BC V1Y 6G1
kris@commercialbc.com
250.870.2165



*The Commercial
Real Estate Experts*



© Kris McLaughlin Personal Real Estate Corporation - All Rights Reserved.

This document/email has been prepared by Kris McLaughlin Personal Real Estate Corporation for advertising and general information only. Kris McLaughlin Personal Real Estate Corporation, REMAX Commercial or REMAX Kelowna makes no guarantees, representations or warranties of any kind, expressed or implied, regarding the information including, but not limited to warranties of content, accuracy and/or reliability. All information contained in this document has been obtained from sources believed to be reliable. It is the responsibility of the reader to independently confirm and verify the accuracy of the information and content of this document and to satisfy themselves as to its completeness. Any financial projects, assumptions, or estimates are used for example only and may or may not reflect the current or future performance of the property. This communication is not intended to cause or induce breach of an existing listing agreement.

