



FOR LEASE

2ND FLOOR OFFICE SERVICES SPACE

200 - 860 McCurdy Road, Kelowna, BC



Kris McLaughlin Personal Real Estate Corporation
kris@commercialbc.com
250.870.2165

REMAX Commercial - REMAX Kelowna
1391 Ellis Street, Kelowna, BC V1Y 6G1

Each Office Independently Owned and Operated.

Property Details

Civic Address:

200 - 860 McCurdy Road, Kelowna, BC

Location:

Building is at the rear of the property with an entrance off of Mayfair Road

Unit Size:

2,457 SF (approximate)

Parking:

Common building parking and abundant street parking in the area

Zoning:

I2 - General Industrial

Lease Rate:

\$14.00/SF + \$4.60/SF in additional rent (estimated for 2025) + applicable taxes

Second Floor Office Space Available in the McCurdy Commercial Area of Kelowna

Opportunity:

RE/MAX Commercial - RE/MAX Kelowna presents this opportunity to lease 2nd floor office space off of McCurdy Road, near Highway 97N.

Features:

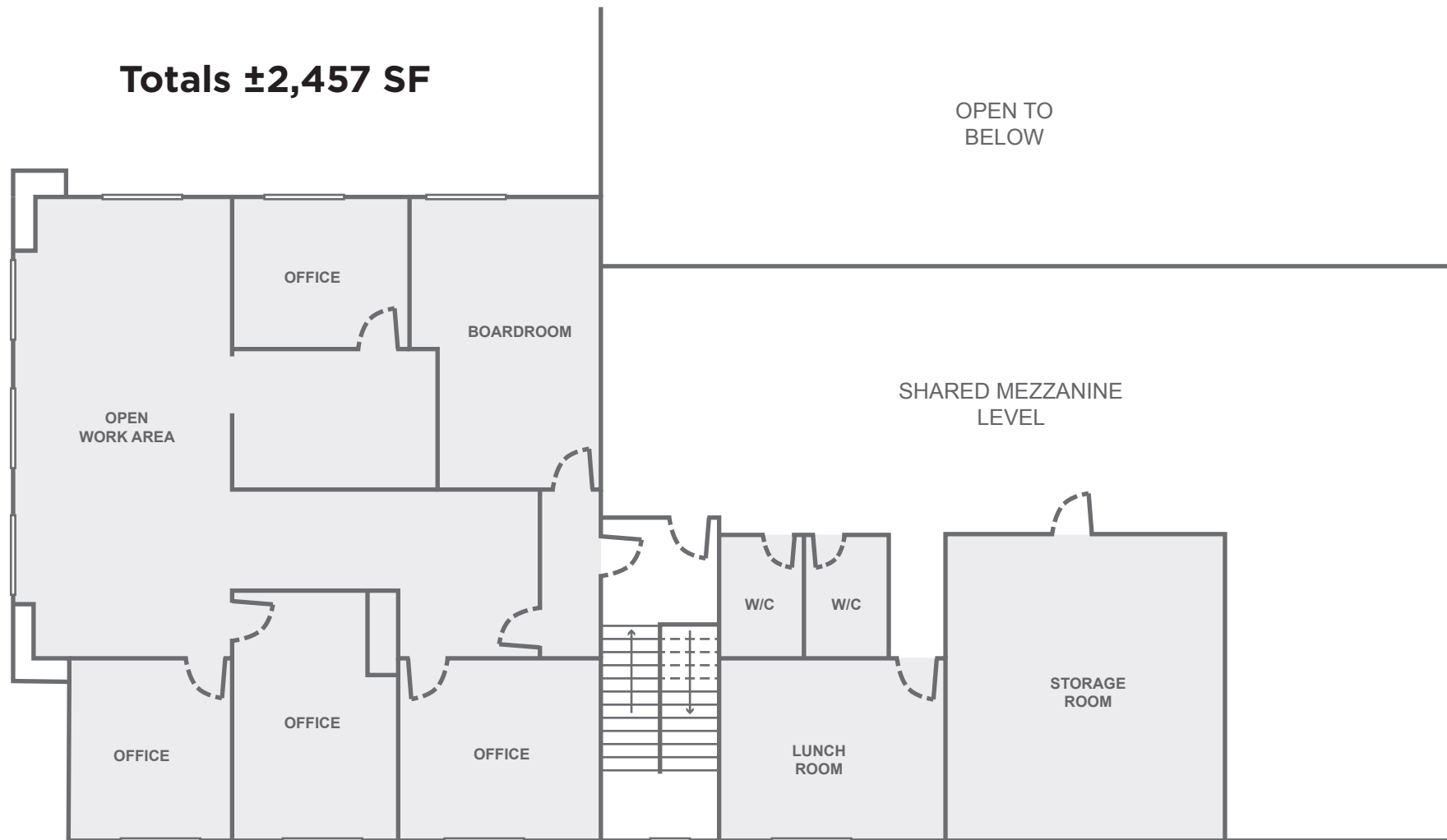
Prime office space on the 2nd floor of an industrial building in a well established commercial area of Kelowna.

- ▶ 2nd floor office space totalling $\pm 2,457$ SF off of McCurdy Rd, this is a 2nd floor walk-up as there is no elevator in the building
- ▶ Well-appointed office space with 4 individual offices, boardroom, large open work area and a reception area. Dedicated washrooms (one with a shower), lunchroom with kitchenette and large storage area are located on the 2nd floor mezzanine level just outside the main entrance to the office area
- ▶ Large windows throughout allow for abundant natural light
- ▶ For more information or to arrange a tour of this space contact Kris McLaughlin Personal Real Estate Corporation of REMAX Commercial - REMAX Kelowna at 250 870 2165 or by email at kris@commercialbc.com



FOR LEASE: 200 - 860 McCurdy Road, Kelowna, BC

Floor Plan - Unit 200



Note: Floor plan has been derived, is approximate and may not be to scale. Some interior walls may have been adjusted. If important, information and configuration should be verified.

FOR LEASE: 200 - 860 McCurdy Road, Kelowna, BC

Interior Photos



FOR LEASE: 200 - 860 McCurdy Road, Kelowna, BC

Interior Photos



FOR LEASE: 200 - 860 McCurdy Road, Kelowna, BC

Interior Photos



FOR LEASE: 200 - 860 McCurdy Road, Kelowna, BC

Exterior Photos

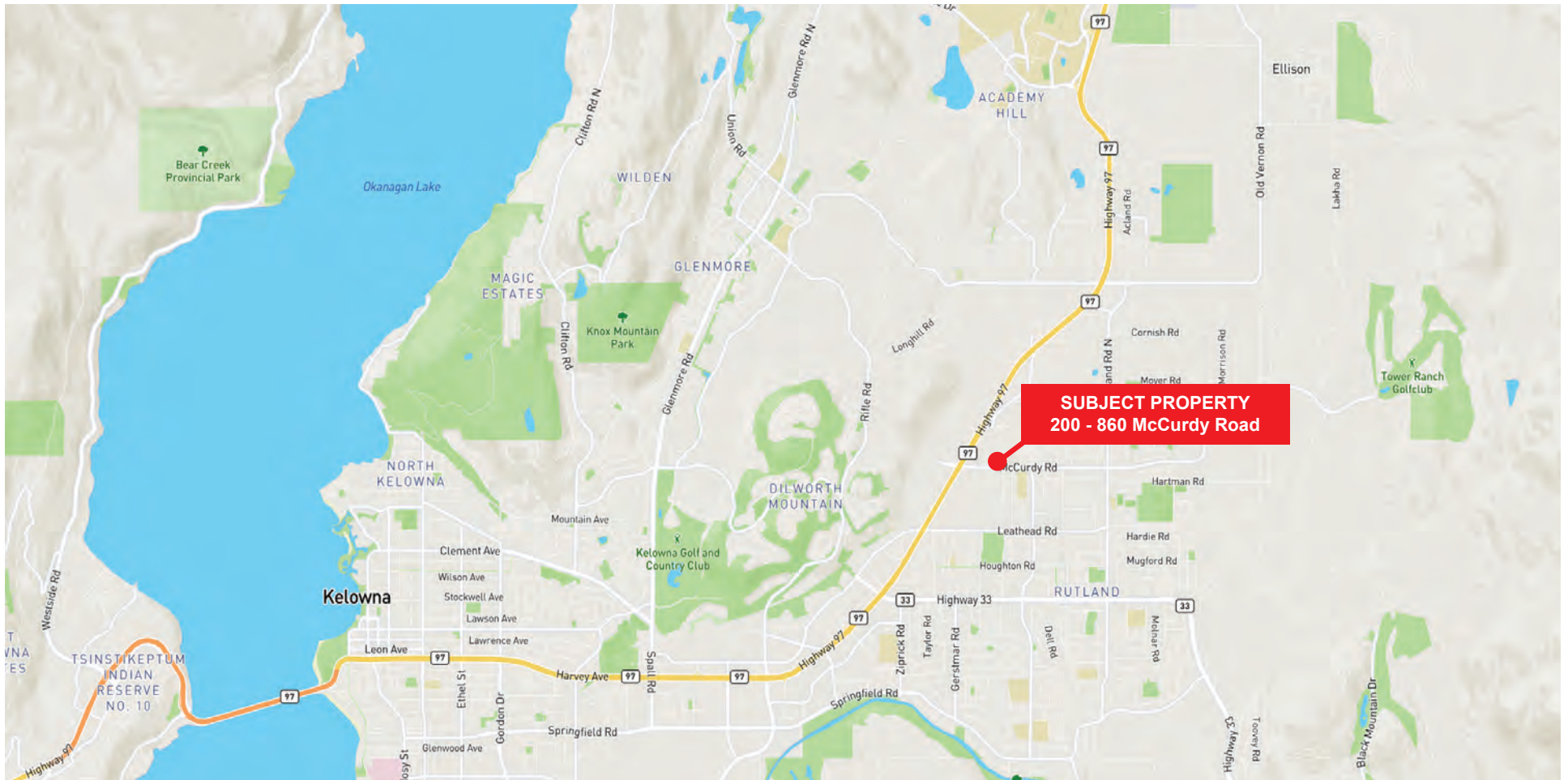


FOR LEASE: 200 - 860 McCurdy Road, Kelowna, BC

Aerial Images



FOR LEASE: 200 - 860 McCurdy Road, Kelowna, BC



Kris McLaughlin Personal Real Estate Corporation
REMAX Commercial - REMAX Kelowna
#100 - 1553 Harvey Ave, Kelowna, BC V1Y 6G1
kris@commercialbc.com
250.870.2165



*The Commercial
Real Estate Experts*



© Kris McLaughlin Personal Real Estate Corporation - All Rights Reserved.

This document/email has been prepared by Kris McLaughlin Personal Real Estate Corporation for advertising and general information only. Kris McLaughlin Personal Real Estate Corporation, REMAX Commercial or REMAX Kelowna makes no guarantees, representations or warranties of any kind, expressed or implied, regarding the information including, but not limited to warranties of content, accuracy and/or reliability. All information contained in this document has been obtained from sources believed to be reliable. It is the responsibility of the reader to independently confirm and verify the accuracy of the information and content of this document and to satisfy themselves as to its completeness. Any financial projects, assumptions, or estimates are used for example only and may or may not reflect the current or future performance of the property. This communication is not intended to cause or induce breach of an existing listing agreement.

