



FOR LEASE

OUTSTANDING MAIN FLOOR OFFICE SPACE

#100 - 2141 Springfield Road, Kelowna, BC



Kris McLaughlin Personal Real Estate Corporation
kris@commercialbc.com
250.870.2165

REMAX Commercial - REMAX Kelowna
1391 Ellis Street, Kelowna, BC V1Y 6G1

Each Office Independently Owned and Operated.

FOR LEASE: #100 - 2141 Springfield Road, Kelowna, BC

Property Details

Civic Address:

#100 - 2141 Springfield Road, Kelowna, BC

Location:

Located in the rear building on the south side of Springfield Road between Cooper Road and Benvoulin Court

Unit Size:

±1,327 SF (Main Floor)

Zoning:

UC3 - Mid-Town Urban Centre

Lease Rate:

\$18.00/SF + Additional Rents of \$12.73/SF (estimated for 2025) and Applicable Taxes

Main Floor Professional Office Space Across From Orchard Park Mall in Central Kelowna

Opportunity:

RE/MAX Commercial - RE/MAX Kelowna presents this outstanding opportunity to lease a main floor office unit along Springfield Road.

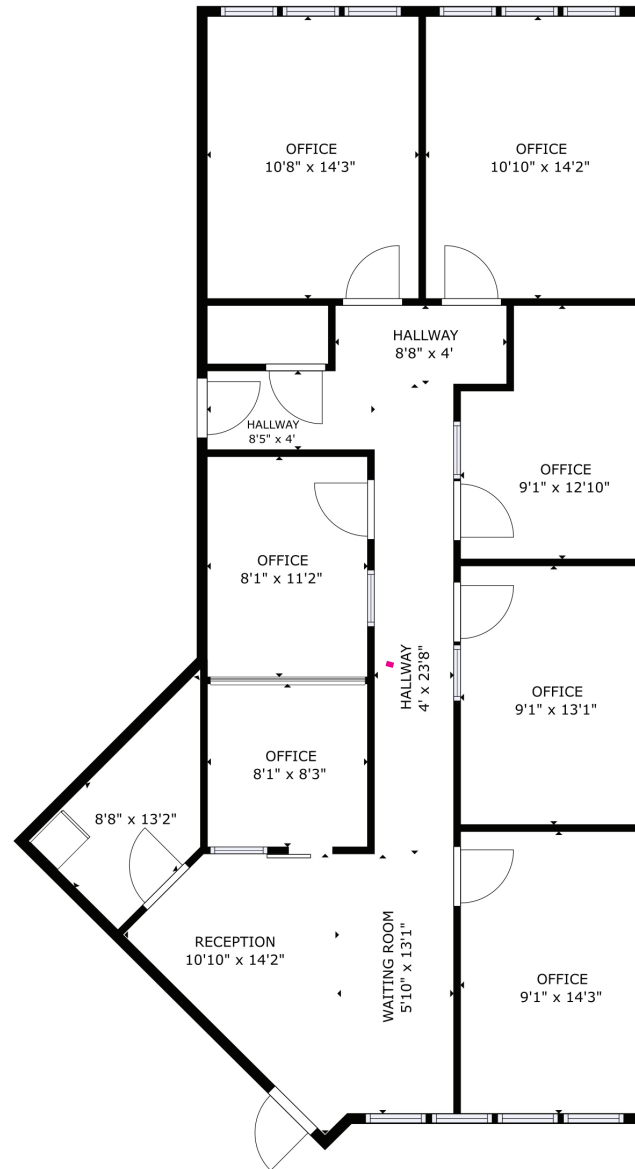
Features:

- ▶ Approximately 1,327 SF of main floor office space with 5 perimeter offices with windows, and a dual work area with a unique glass garage door to separate the space into individual offices
- ▶ Unit also has an inviting entrance with reception & waiting area and a small storage room
- ▶ Shared common washrooms on the same floor
- ▶ Unit has 3 dedicated parking stalls and the complex has plenty of on-site customer parking
- ▶ For more information or to arrange a tour of this space contact Kris McLaughlin Personal Real Estate Corporation of REMAX Commercial - REMAX Kelowna at 250 870 2165 or by email at kris@commercialbc.com



FOR LEASE: #100 - 2141 Springfield Road, Kelowna, BC

Floor Plan



Note: Floor plan has been derived, is approximate and may not be to scale. Some interior walls may have been adjusted. If important, information and configuration should be verified.

FOR LEASE: #100 - 2141 Springfield Road, Kelowna, BC

Interior Photos



FOR LEASE: #100 - 2141 Springfield Road, Kelowna, BC

Interior Photos

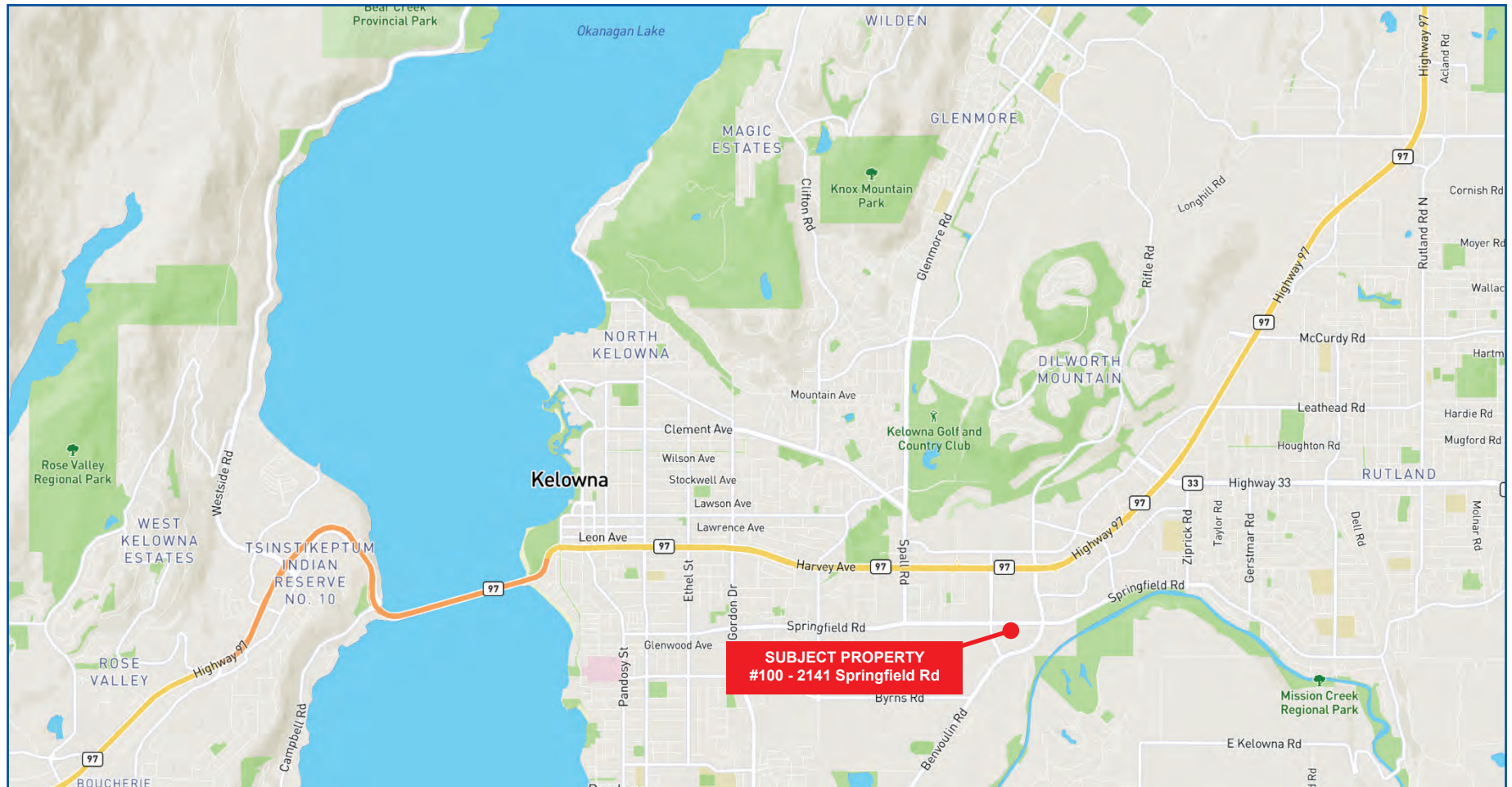


FOR LEASE: #100 - 2141 Springfield Road, Kelowna, BC

Exterior Photos



FOR LEASE: #100 - 2141 Springfield Road, Kelowna, BC



Kris McLaughlin Personal Real Estate Corporation
REMAX Commercial - REMAX Kelowna
#100 - 1553 Harvey Ave, Kelowna, BC V1Y 6G1
kris@commercialbc.com
250.870.2165



*The Commercial
Real Estate Experts*



© Kris McLaughlin Personal Real Estate Corporation - All Rights Reserved.

This document/email has been prepared by Kris McLaughlin Personal Real Estate Corporation for advertising and general information only. Kris McLaughlin Personal Real Estate Corporation, REMAX Commercial or REMAX Kelowna makes no guarantees, representations or warranties of any kind, expressed or implied, regarding the information including, but not limited to warranties of content, accuracy and/or reliability. All information contained in this document has been obtained from sources believed to be reliable. It is the responsibility of the reader to independently confirm and verify the accuracy of the information and content of this document and to satisfy themselves as to its completeness. Any financial projects, assumptions, or estimates are used for example only and may or may not reflect the current or future performance of the property. This communication is not intended to cause or induce breach of an existing listing agreement.

